

## Influence of Socioeconomic Status and Expectations among Completely Edentulous Patients on Conventional Complete Denture Treatment

<sup>1</sup>Monika Saini, <sup>2</sup>Yashpal Singh, <sup>3</sup>Suraj Suvarna

### Abstract:

**Objective:** The purpose of this study was to determine the effect of socioeconomic status on patient expectation from the treatment through a Questionnaire based survey.

**Material and Method:** The Present study was conducted in region of Delhi. 1500 completely edentulous patients with age group of 63-74 yrs who report to Dental OPD first time are taken for the study from the period of January 2015 to January 2016. The sample questionnaire was designed to test the hypothesis. Results were statistically evaluated.

**Results:** Out of 1500 patients, percentage of Upper, Upper middle, Lower middle and Upper Lower and Lower class who had higher expectations from treatment was greatest. Percentage of Patients with No expectation from treatment were highest in Upper Lower and Lower classes.

**Conclusion:** Socioeconomic status of the patients had definite influence on Expectation. Communication and patient education is essential for all socio-economic classes of patients and it becomes even more important for Lower middle and Lower Classes of patients.

### I. Introduction

There is growing population of elderly patients in India. Although the elderly population in India is 7.4% of total population, but this is expected to increase<sup>[8,25,29]</sup> up to 19% by the year 2025. Delhi is capital of India and has population of 18 million people (Delhi Census-2011).

Perception and attitude of patients towards complete denture treatment is changing in present scenario. Now level of expectations of the patients has increased from the past<sup>[7]</sup>. Their mental make up and socio-economic background plays vital role in this. Their socioeconomic background<sup>[30-32]</sup> is one of the major criteria in determining choice of treatment and level of expectation. There is a difference in decision making abilities of upper and lower socioeconomic status patients<sup>[17,19,21,22,30-32]</sup>. Moreover sex of the patient also plays the vital role. Female patients have certain preferences for the treatments that male patients may not have and vice-versa..

There are a few small studies based on awareness, need and expectation of complete denture patient in India. But there is no such study that is conducted in Delhi region on a larger scale. The purpose of this study was to assess the effect of socioeconomic status on patient expectation from the treatment through a Questionnaire based survey.

<sup>[1,13]</sup>. This will help dentist to formulate treatment planning fulfilling needs and expectation of the patient in a better way.

### II. Material And Method

The Present study was conducted in region of Delhi. The nature of study was Observational and Cross-sectional.

1500 completely edentulous patients<sup>[24]</sup> with age group of 63-74 yrs who report to Dental OPDs of Multispeciality Dental Centres for the first time are taken for the study from the period of January 2015 till January 2016. Patients were distributed in following age intervals:

Age (years)
63-65
66 - 68
69 - 71
72-74

The Data collection tool was a Questionnaire. The sample questionnaire to determine Felt needs and expectation of patient based on their socio economic status was formulated. The questionnaire was tested on a few patients to test validity and reliability of the questions through pilot study.

The examiners for the patients [one for each centre] were trained for asking questions and recording the observations to minimize error in filling questionnaire which may arise due to Inter-examiner variability. Confidence level of the study was set at 95%. Margin of error of the study was 5% with response distribution of 50%.

The Questionnaire had namely 3 parts:

1. Socioeconomic background and sex based on Kuppuswamy classification of socioeconomic status scale revised for 2015 using real time update .
2. Question regarding expectations of the patient from the therapy. Based on which they will be divided in to :  
High expectation  
Medium expectation  
Low expectation  
No expectation.

Along with Questionnaire, Informed consent form was prepared.  
SPSS software 2016 [version 22] was used to analyse the result.

Descriptive Analysis for the study was done using following methods:

1. Frequency Distribution Tables
2. % Distribution Table
3. Mean Standard Deviation Tables
4. Bar Diagrams

Inferential analysis was done using following:

1. KruskWallis test for Intergroup comparisons
2. Man-Whitney test for Intragroup comparisons

Statistical Evaluation of the Study was performed by Biomedical Statistician. Results of the study were statistically analysed.

### **III. Results**

Total number of 1500 patients in age group of 63 – 74 years were considered for the Study. Maximum 33.2 percentage of Patients (498) were between 63-65 Years. Minimum of 16.2 percent (243) Patients were between 69-71 years. 58 percent (870) of patients for the study were males and 42 percent (630) of patients were females. [Table 1 and Figure 1]

Maximum percentage [Number] of Males was in Upper class 55 percent [478] and minimum was in Lower class 3 percent [27]. percentage [Number] of Females in was also maximum in Upper class 47.9 percent [302] and minimum in Lower class 2.8 percent [18]. [Table 2]

Percentage [Number] of Upper class patients was highest 52 percent [780] and Lowest in Lower class and 3 percent [45]. [Table 3]

Total percentage of Patients having High expectation from the treatment was greatest followed by Medium, Low and No expectation from treatment. [Table 4 and Figure 2]

Total percentage [Number] of Patients having High expectation from treatment was greatest in Upper Class 58 percent [452] and Lowest in Lower class 42 percent [19]. Total percentage [Number] of Patients having Medium expectation was highest in Lower class 27 percent [12] and Lowest in Upper class 21 percent [164]. Total % percentage [Number] of Patients having Low expectation from treatment was greatest in Lower Class 20 percent [9] and Lowest in Upper class 12 percent [94]. Total percent [Number] of Patients having No expectation from treatment was greatest in Upper Lower Class 15 percent [20] and Lowest in Upper 9 percent [70] and Upper middle class 9 percent [27].

### **IV. Discussion**

There has been a few studies regarding Awareness<sup>11-12,16</sup>, Expectation and Satisfaction<sup>2-3,5,7,9,13-15,19,28</sup> Needs<sup>10,16-17</sup> for the Patients for Complete dentures. But a study based on Indian Population that comprises all abovementioned factors and has large sample size to predict outcome with substantial significance was lacking. Also the detailed statistical evaluation which was lacking in most India based studies was done<sup>10,11,16,20,23,25,26,29,30-32</sup>. Therefore this study was designed to fulfill this lacunae.

Delhi was chosen for place of study as it is the capital of India and sample size of 1500 patient with age group of 63-74 was chosen seeing 18 million Population in Delhi and out of which 19% is edentulous<sup>8,10,24-25</sup>. Socioeconomic status of patients was taken in to consideration for classifying patients for the study as it had great impact on all variables used for the study<sup>27,30-32</sup>. [Expectation and Need].

A sample Questionnaire was used for study<sup>1</sup>. Questions based on expectation and Needs of the patients were asked. Most common questions that were used in earlier studies were also taken in to consideration. The questionnaire was tested on a few patients to test validity and reliability of the questions through pilot study. The examiners for the patients [one for each centre] were trained for asking questions and recording the observations to minimize error in filling questionnaire which may arise due to Inter-examiner variability

Table 2 shows larger percentage of patients [55 percent of males and 47.9 percent of females] were of Upper class. This is expected as Delhi is metropolitan city mainly comprising of Urban and educated class population. Upper middle, Lower middle and Upper lower class male and female patients percentage were in decreasing order respectively. It is expected as patients were of Higher income group in Delhi. Only lesser percent [3 percent of males and 2.8 percent of females] were of lower class who sought for the treatment. Distribution of patients in different socioeconomic classes were based on Kuppuswamy classification<sup>31,32</sup>. A real time update 2015 tool was used to distribute patients in different classes.

Table 3 shows that 52 percent of Patients were of Upper class. It is expected as study was conducted in Cosmopolitan city. Only 3 percent of patients were of lower class. percentage of Upper middle, Lower middle and Upper Lower were 20 percent, 16 percent and 9 percent respectively. This is in accordance with expected trend of population in Delhi. *Delhi standard of living and per capita income is higher as compared to other neighbouring states and job opportunities are more. This is the reason for the observation*

Table 4 and Figure 2 show that larger percentage of patients in all socioeconomic groups had Higher expectation from treatment and least percentage of patients in all socioeconomic groups has no expectation from treatment. percentage of Patients having higher expectation in Upper, Upper middle, Lower middle, upper lower and Lower class were 58, 52, 48, 44 and 42 percent respectively. This is in co-relation with earlier studies<sup>12,14,15</sup> and also is expected because Delhi is cosmopolitan city. Upper class patients are more concerned with treatment outcome and have high expectation and willing to pay more for this. Even Lower class patients in Metropolitan cities demand best treatment results due to increased peer pressure and increased exposure to materialistic aspects of life. Overall Quality of life of patients is better in Delhi. Even Upper lower and lower class patients wants to seek better Quality of life. Results have higher significance and are decisive in nature. We can predict that Patients of any socioeconomic class in Metropolitan city has higher expectation from the treatment.

Percentage of Patients with Low and No expectation from treatment were highest in Upper Lower and Lower classes. These are the classes with minimal income group. This can be related to Psychosocial attitude of these groups. This is in contrast to Upper and Upper middle classes positive psychosocial attitude where patients with Low and No expectation were least. Patients of Lower and Upper lower classes are more interested in meeting daily needs of life. This might be reason for the observation. Whereas Upper class patients expect more out of the treatment result because of the peer pressure and their willingness to spend more because of higher income. Patients with Lower middle class had highest [18 percent] of Low expectation. But this might not be representative of the class.

Percentage of Patients with Medium expectation were lowest in Upper class [21 percent] and Highest in Lower class [27 percent]. This was in accordance with expected trend and reason for the same has been discussed above.

## V. Conclusion

1500 completely edentulous patients were evaluated through questionnaire for their expectation and Felt needs regarding complete dentures.

Majority of patients who seek complete denture therapy were from Upper class in metropolitan city like Delhi. Larger percentage of Patients in all socioeconomic groups have Higher expectation from the treatment. Dentist should take socioeconomic status of patient in to consideration. The Dentist should believe that majority of patients [be it of any socioeconomic group] have higher expectation from treatment. Therefore the dentist should communicate with the patients so that they have realistic expectation from treatment and do not get disappointed from outcome of treatment.

It can be concluded that socio-economic status of patients had definite and marked influence on Expectations of the patients. This affects success of complete denture therapy as a whole.

Expectation of Patients based on their Socioeconomic status of Patients were considered as Parameters for the study. Other Factors like Need of the patients can also be taken in to consideration for further studies on this subject. Same design of study can also be used for Implant supported complete denture therapy as nowadays it has become the recent treatment modality for treating completely edentulous patients.

## References

- [1]. Levin B, Landersman HM. A Practical Questionnaire for Predicting denture success or failure. *J Prosthet Dent*. February 1976;35(2):124-30.

- [2]. Davis EL, Albino JE, Tedesco LA et al. Expectations and satisfaction of denture patients in a university clinic. *J Prosthet Dent.* 1986 Jan;55(1):59-63.
- [3]. Mojon P, MacEntee M .Discrepancy between need for prosthodontic treatment and complaints in an elderly edentulous population . *Community Dent Oral Epidemiol.* 1992 Feb;20(1):48-52.
- [4]. Marcus PA, Joshi A, Jones JA, et al. Complete edentulism and denture use for elders in New England. *J Prosthet Dent.* 1996 Sep;76(3):260-6.
- [5]. Fiske J, Davis DM, Frances C et al. The emotional effects of tooth loss in edentulous people. *Br Dent J.* 1998 Jan 24;184(2):90-3.
- [6]. Chester W ,Cherilyn G S.Patient expectation for oral health care in 21st century.June 2000: *J Am Dent Assoc.* 2000 Jun;131.
- [7]. Omar R, Tashkandi E, Abduljabbar T et al. Sentiments expressed in relation to tooth loss: a qualitative study among edentulous Saudis. *Int J Prosthodont.* 2003 Sep-Oct;16(5):515-20.
- [8]. Peterson PE .Challenges to improvement of Oral health in 21<sup>st</sup> century-the approach of WHO global health programme.*Int dent J* .2004 Dec;54(6 suppl 1) :329-43.
- [9]. Winkler S. House Mental Classification System of Denture Patients: The Contribution of Milus M. House.2005: *J Oral Implantol.* 2005;31(6):301-3.
- [10]. Pankaj G, Kanwarjit S, Arundeeep K et al. Oral healthcare for elderly : Identifying the needs and feasible strategies for service provision . *Indian J Dent Res.* 2006 Jan-Mar;17(1):11-21.
- [11]. Kamal S,Mamta H,Gangadhar H .Attitude towards replacement of teeth among patients at the institute of dental sciences ,Belgaum,India..*J Den Edu.*2007 November;71(11):1467-74.[ PMID:17971577 ]
- [12]. de Castellucci Barbosa L, Ferreira MR, de Carvalho Calabrach CF et al. Edentulous patients' knowledge of dental hygiene and care of prostheses. *Gerodontology.* 2008 Jun;25(2):99-1067.
- [13]. Bellini D, Dos Santos MB, De Paula Prisco et al. Patients' expectations and satisfaction of complete denture therapy and correlation with locus of control. *J Oral Rehabil.* 2009 Sep;36(9):682-6.
- [14]. de Souza e Silva ME, de Magalhães CS, Ferreira et al. Complete removable prostheses: from expectation to (dis)satisfaction. *Gerodontology.* 2009 Jun;26(2):143-9.
- [15]. Marachlioglou CR1, Dos Santos JF, Cunha VP et al. Expectations and final evaluation of complete dentures by patients, dentist and dental technician. *J Oral Rehabil.* 2010 Jul;37(7):518-24.
- [16]. Suresh S,Swati S .A clinical survey to determine awareness and needs of a complete denture among complete edentulous patients.*J.Int Oral Health* .2010 October ;2(3):22-25.
- [17]. Gadeer M, Medyaan R, Basma .Needs and demands of prosthetic treatment among two groups of individuals. *Indian J Dent Res.* 2010 Oct-Dec;21(4):5647.
- [18]. Carlsson GE, Omar R .The future of complete dentures in oral rehabilitation. A critical review . *J Oral Rehabil.* 2010 Feb;37(2):143-56.
- [19]. İlgi B, Gülfem E, and Mustafa S .Socio-Demographic and Economic Factors Affecting the Acceptance of Removable Dentures. *J Oral Rehabil.* 2010 Feb;37(2):143-56.
- [20]. Ramesh C, and Neeraj C .Clinical survey of denture care in denture-wearing edentulous patients of Indian population. *Geriatr Gerontol Int.* 2011 Apr;11(2):191-5.
- [21]. de Siqueira GP, dos Santos MB, dos Santos JF et al .Patients' expectation and satisfaction with removable dental prosthesis therapy and correlation with patients' evaluation of the dentists.*Acta Odontol Scand.* 2013 Jan;71(1):210-4
- [22]. Gaspar MG, dos Santos MB, dos Santos JF et al .Correlation of previous experience, patient expectation and the number of post-delivery adjustments of complete dentures with patient satisfaction in a Brazilian population.*J Oral Rehabil.* 2013 August;40(8):590-4.
- [23]. Chaudhary A,Ingle NA,Kaur N,Nagpal A et al.Footpath Quacks.*Br Dent J.*2013 May;214(9): 429.
- [24]. Kim J , Seo BS .How to Calculate sample size and why? . *clin orthop surg.*2013 Sep;5(3):235-42
- [25]. Chhabra A,Chhabra N,Kabi D et al .Understanding dental status and treatment need of geriatric patients:Oral health trends in Indian population.*Oral health dent manag.*2013 Dec;12(4):213-6.
- [26]. Sivakumar I,Sajjan S,Ramaraju AV et al.Changes in Oral Health-Related Quality of Life in Elderly Edentulous Patients after Complete Denture Therapy and Possible Role of their Initial Expectation: A Follow-Up Study: *J Prosthodont.* 2015 August;24(6):452-6.
- [27]. Santos BF, dos Santo MB,Santos JF et al.Patients' Evaluations of Complete Denture Therapy and Their Association with Related Variables: A Pilot Study: *J Prosthodont.* 2015 July; 24(5):351-7.
- [28]. Zou Y, Zhan D.Patients' expectation and satisfaction with complete denture before and after the therapy.*Vojnosanit Pregl.*2015 June;72(6): 495-8.
- [29]. Chaudhary A,Ingle NA,Kaur N,Nagpal A et al.Geriatric Dentistry –A review.*J Oral Health Comm Dent.*September 2013;7(3): 170-3.
- [30]. Bairwa M,Rajput M,Sachdeva S. Modified kuppusswamy's socioeconomic scale: social researcher should include updated income criteria,2012.*Indian J Community Med.*July 2013;38(3):185-6
- [31]. Sharma R,Saini NK.A Critical Appraisal of Kuppusswamy's Socioeconomic Status Scale in the Present Scenario.*J Family Med Prim Care.*January 2014;3(1):3-4.
- [32]. Singh BP,Pradhan KN,Tripathi A,Tua et al.Effect of sociodemographic variables on complete denture satisfaction.*J Adv Prosthodont.*February 2012;4(1):43-51.

**Tables**

**Table 1 : % Frequency Distribution by Age of Patients**

Age (years)	Frequency	Frequency (%)	Mean	SD	SEM
63-65	498	33.2	68.74	3.525	.091
66 - 68	353	23.5			
69 - 71	243	16.2			
72-74	406	27.1			
Total	1500	100.0			

Values are expressed in numbers,Mean, SD[Standard Deviation] and SEM[Standard error of Mean]

**Table 2 : Sex Distribution of Patients based on Socioeconomic status**

Sex	Upper		Upper middle		Lower middle		Upper lower		Lower		Total	%
	No.	%	No.	%	No.	%	No.	%	No.	%		
M	478	55	148	17	130	15	87	10	27	3	870	58
F	302	47.9	152	24.2	110	17.5	48	7.6	18	2.8	630	42

[ $\chi^2 = 16.522$ ,  $df = 4$ ,  $p = 0.0024$ , So,  $p < 0.05$  Significant].

Values are expressed in numbers,  $\chi^2$  [Standard deviation],  $df$  [Degree in freedom] and  $p$ .

**Table 3: Distribution of patients based on their Socioeconomic status**

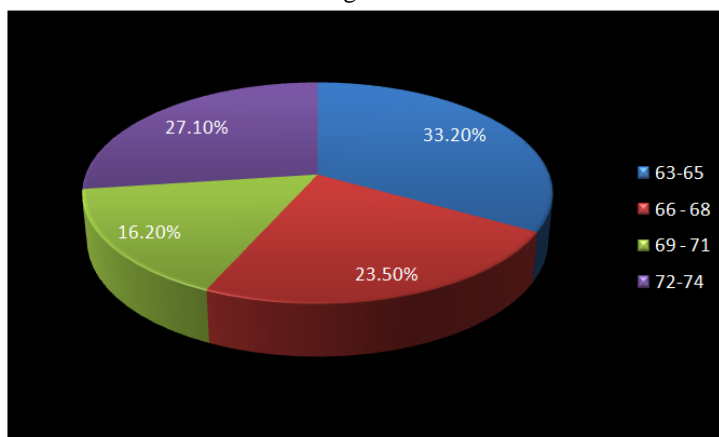
Socioeconomic class	Number of patients	Percentage of patients
Upper	780	52
Upper middle	300	20
Lower middle	240	16
Upper Lower	135	9
Lower	45	3

**Table 4: Distribution of Patients based on their response on Expectation from the treatment**

S.no	Socio-economic group	N	High Expectation	Medium expectation	Low Expectation	No Expectation	Mean Rank	Chi - Square Variate	df	P value
1.	UPPER	780	452	164	94	70	715.90	17.213	4	.002
2	UPPER MIDDLE	300	156	72	45	27	758.22			
3	LOWER MIDDLE	240	115	62	43	20	786.64			
4	UPPER LOWER	135	59	32	24	20	839.95			
5	LOWER	45	19	12	9	5	837.68			

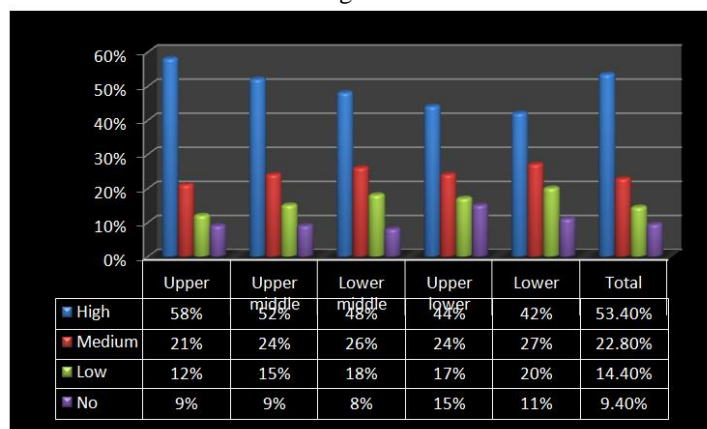
**FIGURES:**

Figure I:



% Frequency distribution by the age of the Patients

Figure 2



% distribution of Patients based on their response on Expectation from the treatment.